

EIA REPORT

Legend

City Boundary

Assessment Boundary

Proposed N6 GCRR

Study Area 250m Buffer Zone

Mineral Localities (ML)

Both

Metallic

Crushed Rock Aggregate Potential

Very High potential

High potential

Moderate potential

© National Mapping Division of Taitte Éireann .
All rights reserved. Licence number CYAL50333446

Clients

An Roinn Iompair
Department of Transport

Tionscadal Éireann
Project Ireland
2040

Galway City
Transport Project

Comhairle Chontae na Gaillimhe
Galway County Council

TII

Key Plan

Consultant

ARUP

Corporate House
City East Business Park
Ballybrit, Galway, Ireland

Tel +353 (0)91 460675
www.N6GalwayCity.ie
www.arup.ie

Job Title

N6 Galway City Ring Road

Scale: 1: 5000 @A3

Date: February 2025

I1	28/02/2025	MF	EC	MH
Issue	Date	By	Chkd	Appd

Drawing Title

Mineral and Aggregate
Sheet 1 of 15

Drawing Status

For Information

Job No

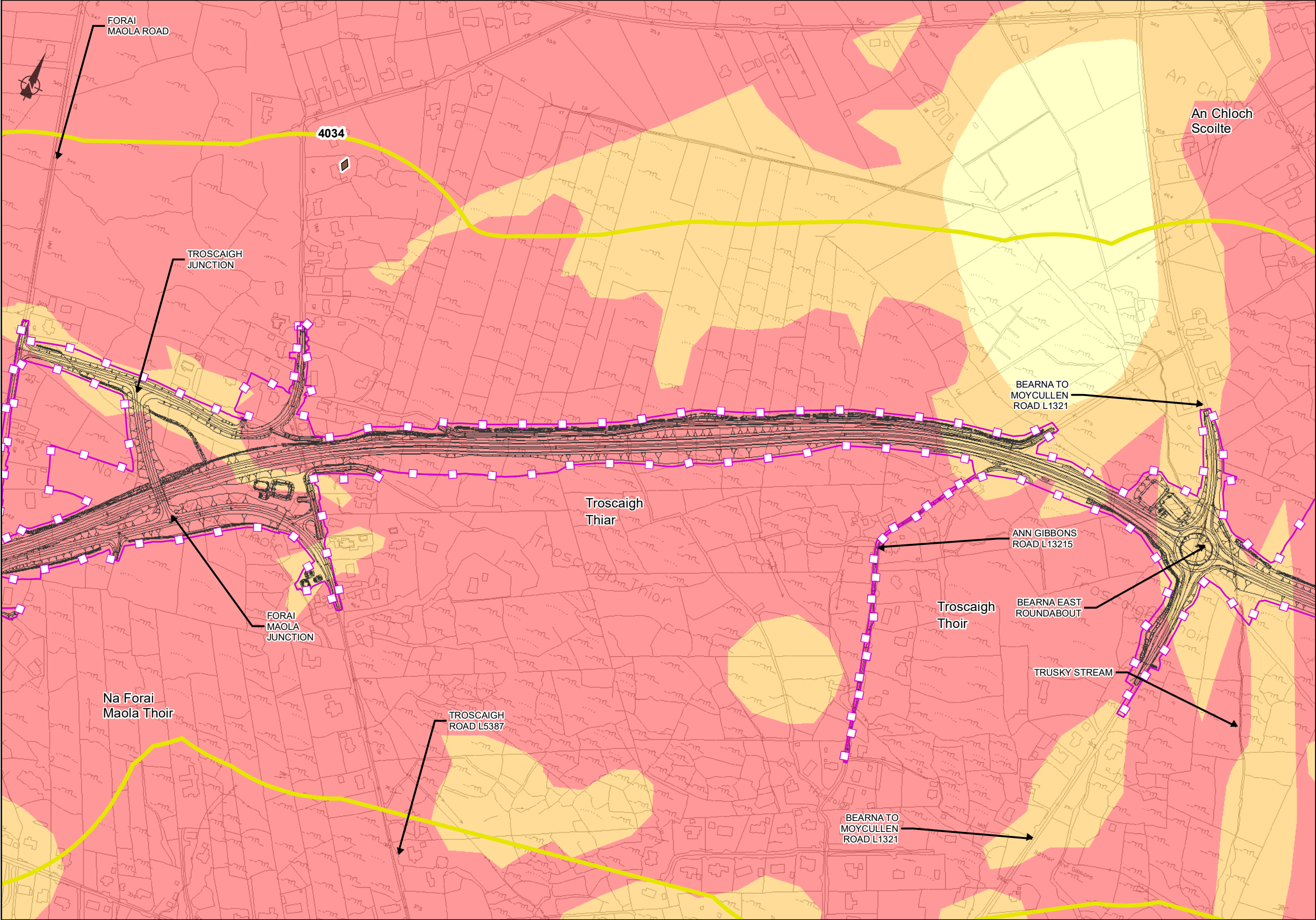
233985

Drawing No

Figure 9.6.101

Issue

11



EIA REPORT

Legend

City Boundary

Assessment Boundary

Proposed N6 GCRR

Study Area 250m Buffer Zone

Mineral Localities (ML)

Non-metallic

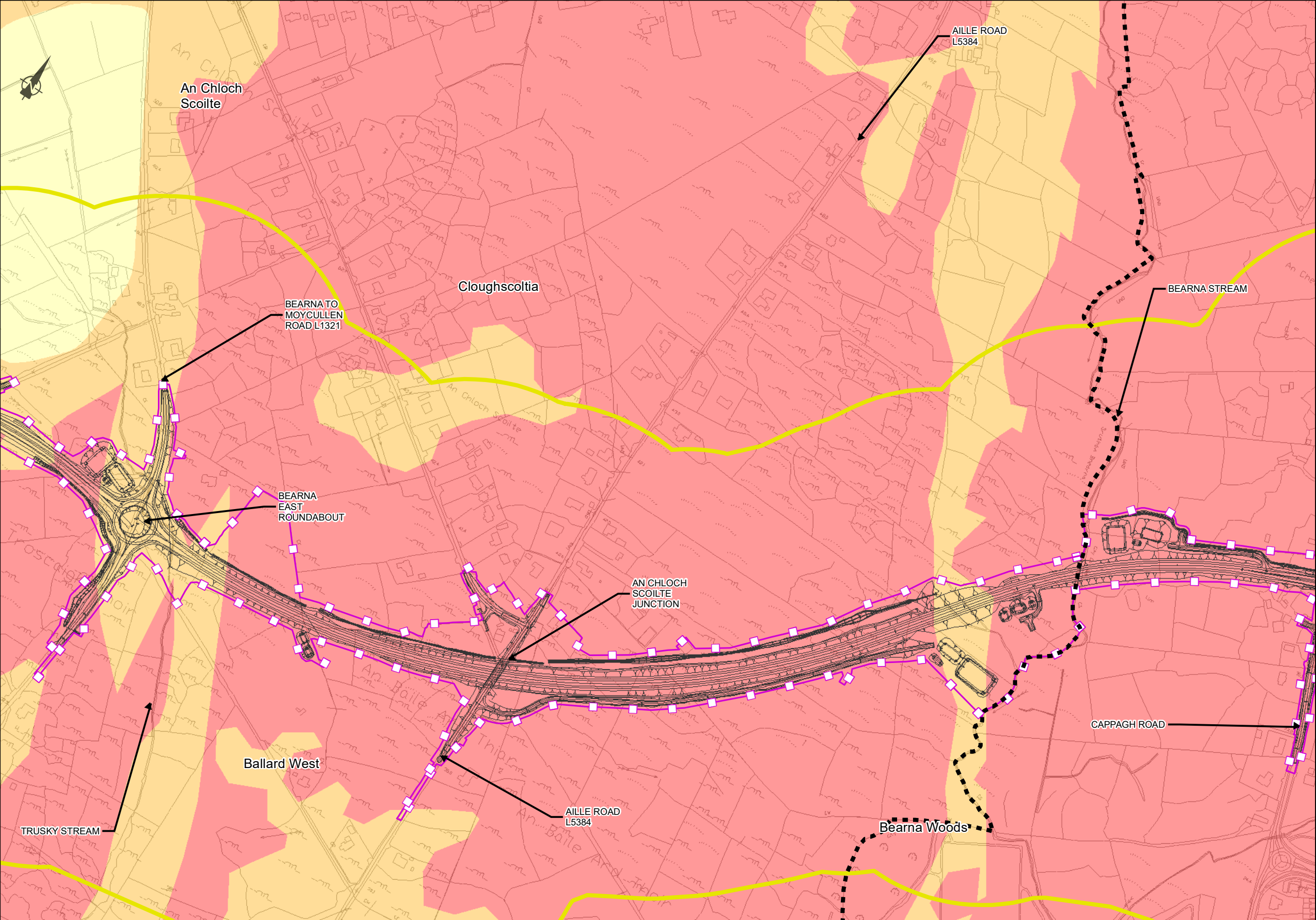
Crushed Rock Aggregate Potential

Very High potential

High potential

Moderate potential

© National Mapping Division of Taitte Éireann .
All rights reserved. Licence number CYAL50333446



EIA REPORT

City Boundary

Assessment Boundary

Proposed N6 GCRR

Study Area 250m Buffer Zone

Crushed Rock Aggregate Potential

Very High potential

High potential

Moderate potential

© National Mapping Division of Taitte Éireann .
All rights reserved. Licence number CYAL50333446

Clients

An Roinn Iompair
Department of Transport

Tionscadal Éireann
Project Ireland
2040

N6

Galway City
Transport Project

Comhairle Chontae na Gaillimhe
Galway County Council

TIIV

Transport Infrastructure
Investment Vision

The Key Plan shows the project location within the context of the N6 corridor. It includes a scale bar and a north arrow. The drawing area is highlighted in red, showing its position relative to the surrounding roads and landscape.

Consultant

ARUP

Corporate House
City East Business Park
Ballybrit, Galway, Ireland

Tel +353 (0)91 460675
www.N6GalwayCity.ie
www.arup.ie

Job Title

N6 Galway City Ring Road

Scale: 1: 5000 @A3

Date: February 2025

Issue	Date	By	Chkd	Appd
I1	28/02/2025	MF	EC	MH

Drawing Title

Mineral and Aggregate
Sheet 3 of 15

Drawing Status

For Information

Job No

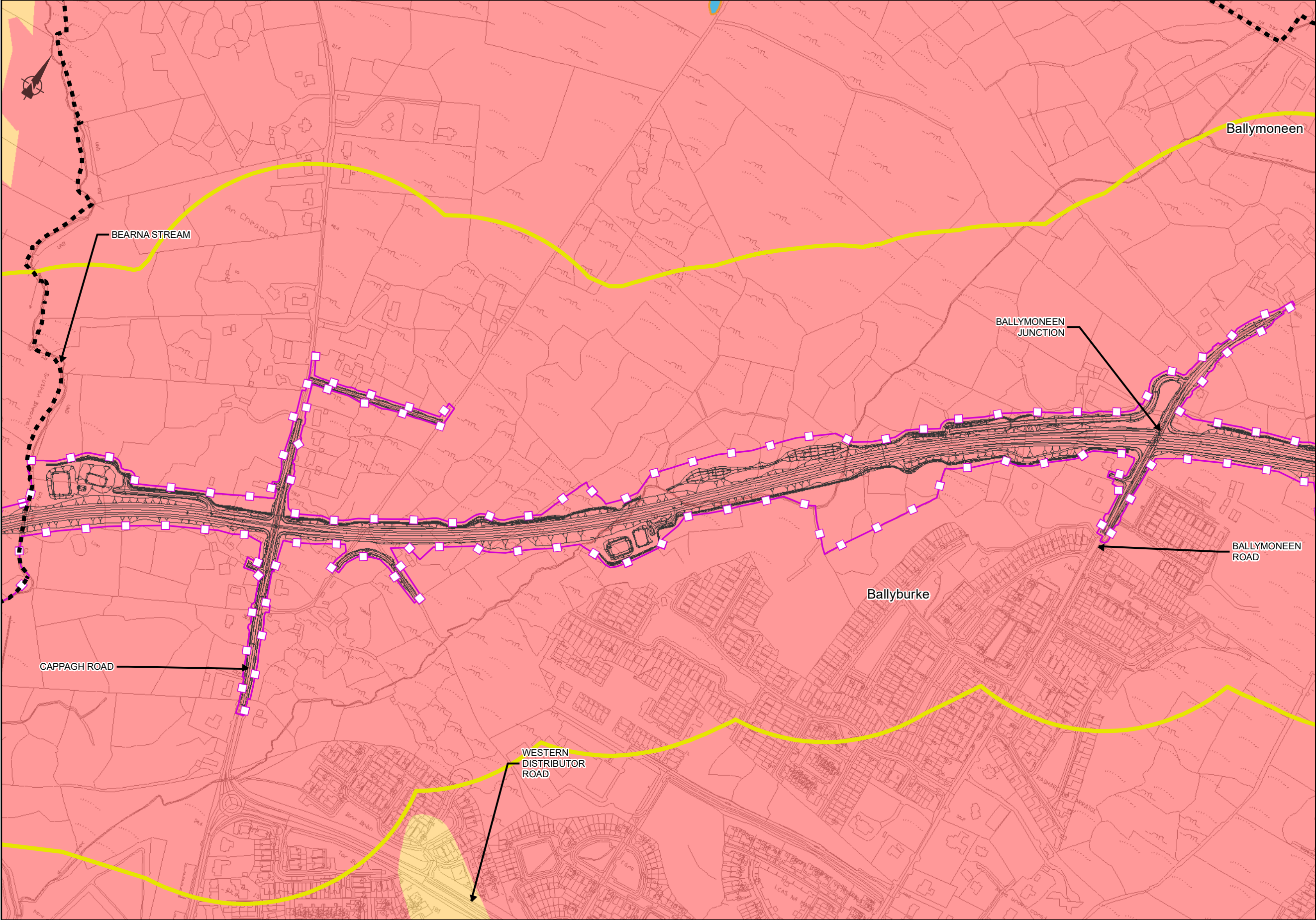
233985

Drawing No

Figure 9.6.103

Issue

11



EIA REPORT

Legend

City Boundary

Assessment Boundary

Proposed N6 GCRR

Study Area 250m Buffer Zone

Pit and Quarry Activity Period

Early to Mid-20thC: Pits

Crushed Rock Aggregate Potential

Very High potential

High potential

© National Mapping Division of Taitte Éireann .
All rights reserved. Licence number CYAL50333446

Clients

An Roinn Iompair

Department of Transport

Tinnseadail Éireann

Project Ireland 2040

Galway City

Transport Project

Comhairle Chontae na Gaillimhe

Galway County Council

TII

Transport Infrastructure Ireland

Consultant

Corporate House

City East Business Park

Ballybrit, Galway, Ireland

Tel +353 (0)91 460675

www.N6GalwayCity.ie

www.arup.ie

Job Title

N6 Galway City Ring Road

Scale: 1: 5000 @A3

Date: February 2025

I1	28/02/2025	MF	EC	MH
Issue	Date	By	Chkd	Appd

Drawing Title

Mineral and Aggregate

Sheet 4 of 15

Drawing Status

For Information

Job No

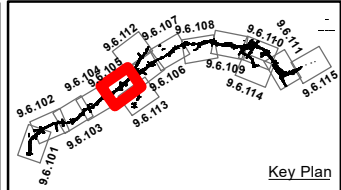
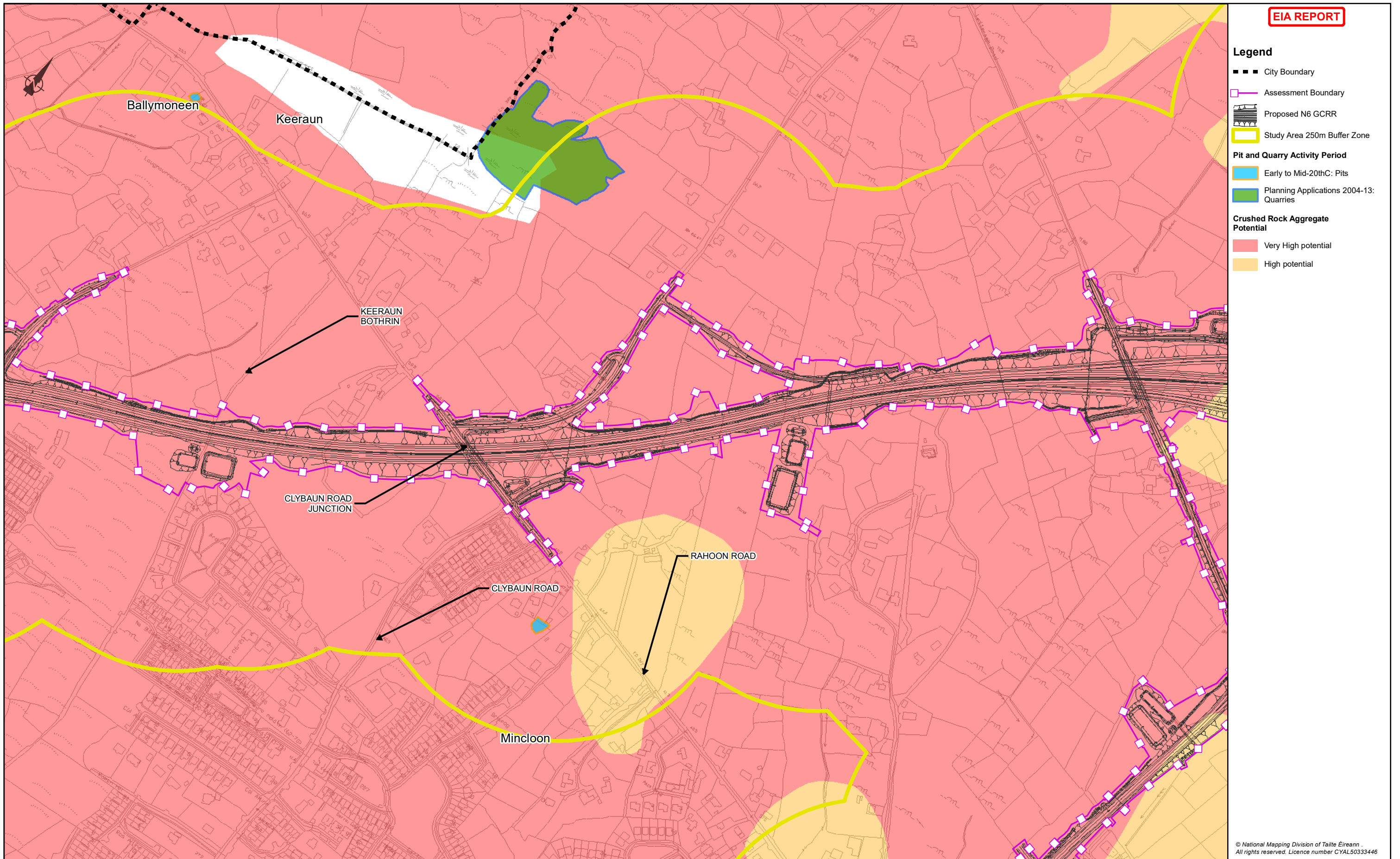
233985

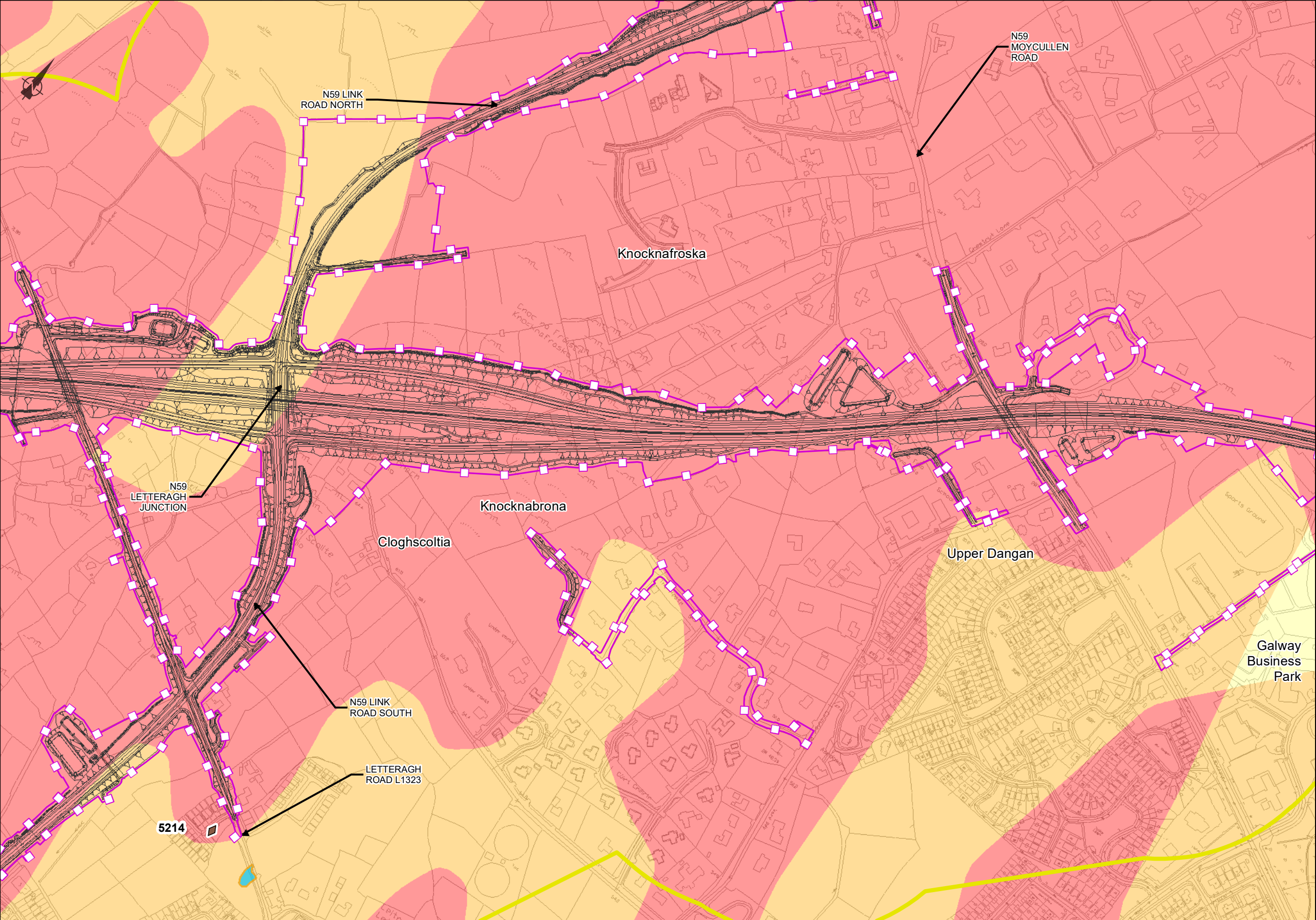
Drawing No

Figure 9.6.104

Issue

11





EIA REPORT

Legend

- City Boundary
- Assessment Boundary
- Proposed N6 GCRR
- Study Area 250m Buffer Zone

Mineral Localities (ML)

- Non-metallic

Pit and Quarry Activity Period

- Early to Mid-20thC: Pits

Crushed Rock Aggregate Potential

- Very High potential
- High potential
- Moderate potential

© National Mapping Division of Taitte Éireann
All rights reserved. Licence number CYAL50333446

Clients

Consultant

Corporate House

City East Business Park

Ballybrit, Galway, Ireland

Tel +353 (0)91 460675

www.N6GalwayCity.ie

www.arup.ie

Job Title

N6 Galway City Ring Road

Scale: 1: 5000 @A3

Date: February 2025

Drawing Title

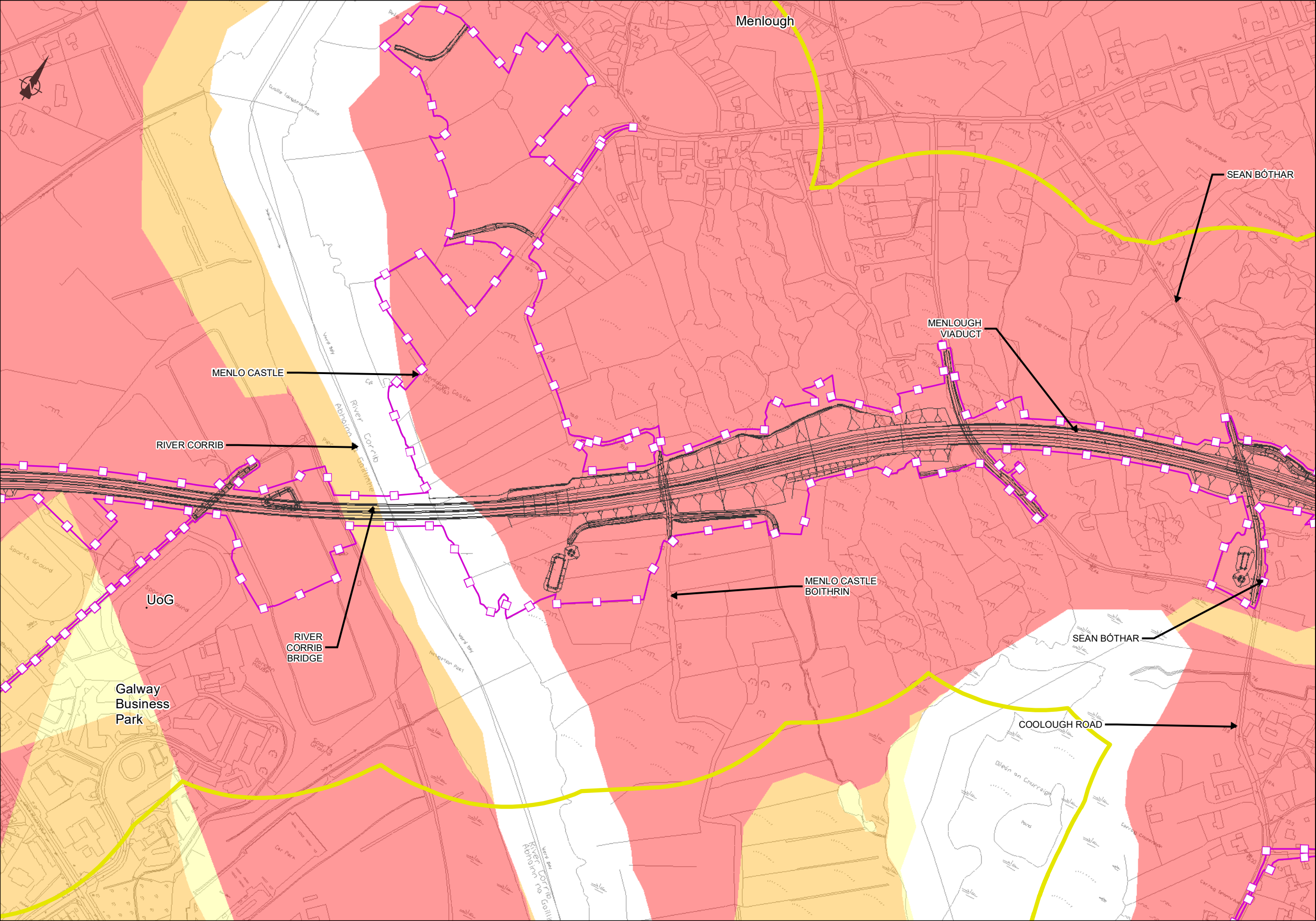
Mineral and Aggregate

Sheet 6 of 15

Drawing Status

For Information

Job No	Drawing No	Issue
233985	Figure 9.6.106	11



EIA REPORT

Legend

City Boundary

Assessment Boundary

Proposed N6 GCRR

Study Area 250m Buffer Zone

Mineral Localities (ML)

Non-metallic

Crushed Rock Aggregate Potential

Very High potential

High potential

Moderate potential

© National Mapping Division of Taitte Éireann .
All rights reserved. Licence number CYAL50333446

Clients

An Roinn Iompair
Department of Transport

Táinigadál Éireann
Project Ireland 2040

Galway City
Transport Project

Comhairle Chontae na Gaillimhe
Galway County Council

TIIV

Key Plan

Consultant

ARUP

Corporate House
City East Business Park
Ballybrit, Galway, Ireland

Tel +353 (0)91 460675
www.N6GalwayCity.ie
www.arup.ie

Job Title

N6 Galway City Ring Road

Scale: 1: 5000 @A3

Date: February 2025

I1	28/02/2025	MF	EC	MH
Issue	Date	By	Chkd	Appd

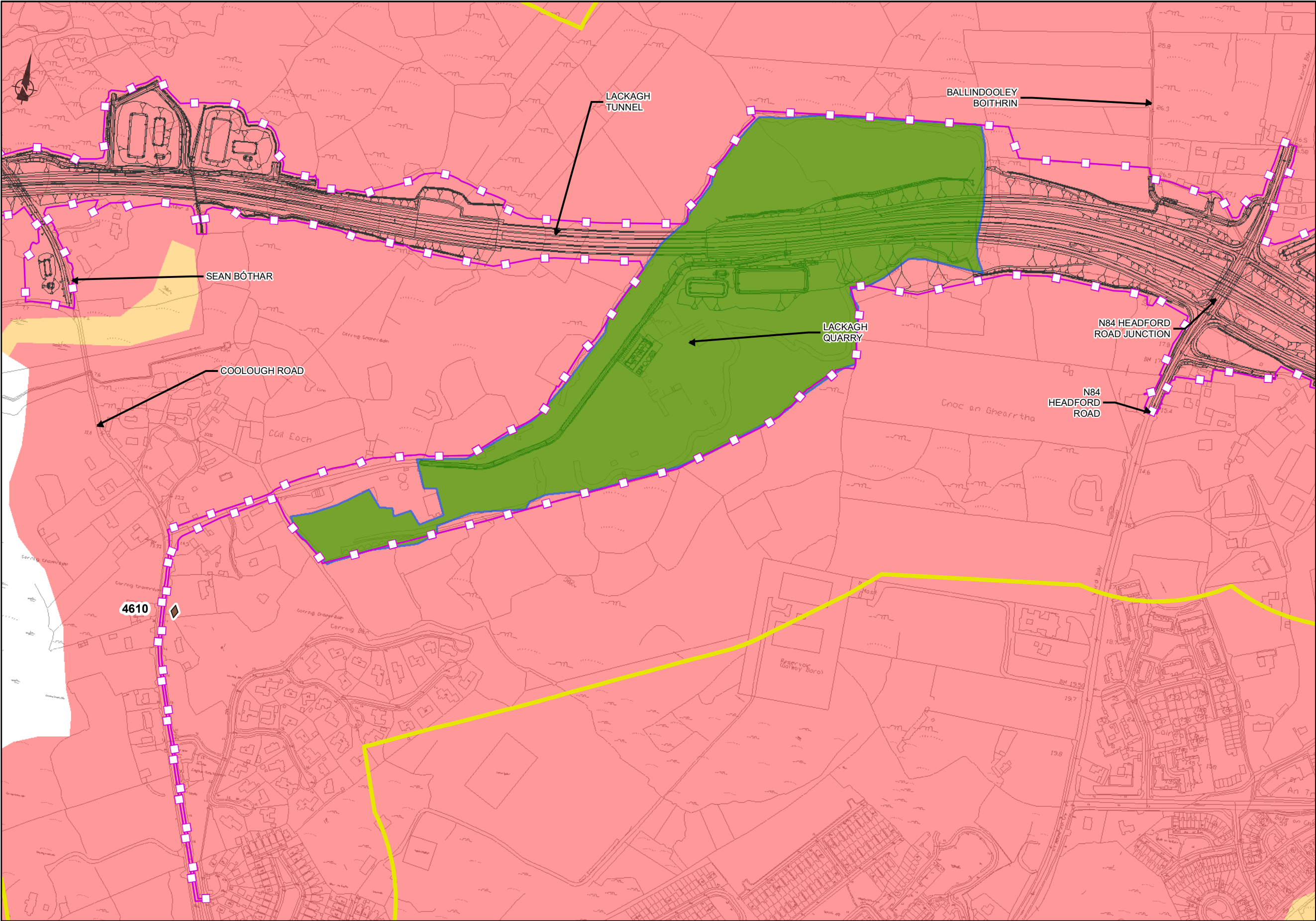
Drawing Title

Mineral and Aggregate
Sheet 7 of 15

Drawing Status

For Information

Job No	Drawing No	Issue
233985	Figure 9.6.107	11



EIA REPORT

Legend

City Boundary

Assessment Boundary

Proposed N6 GCRR

Study Area 250m Buffer Zone

Mineral Localities (ML)

Non-metallic

Pit and Quarry Activity Period

Planning Applications 2004-13: Quarries

Crushed Rock Aggregate Potential

Very High potential

High potential

© National Mapping Division of Taitte Éireann
All rights reserved. Licence number CYAL50333446

Clients

An Roinn Iompair
Department of Transport

Tionscadal Éireann
Project Ireland
2040

N6

Galway City
Transport Project

Galway County Council

Comhairle Chontae na Gaillimhe

TIU

Transport Infrastructure Unit

Consultant

ARUP

Corporate House
City East Business Park
Ballybrit, Galway, Ireland

Tel +353 (0)91 460675
www.N6GalwayCity.ie
www.arup.ie

Job Title

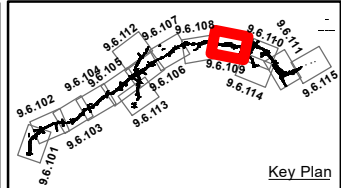
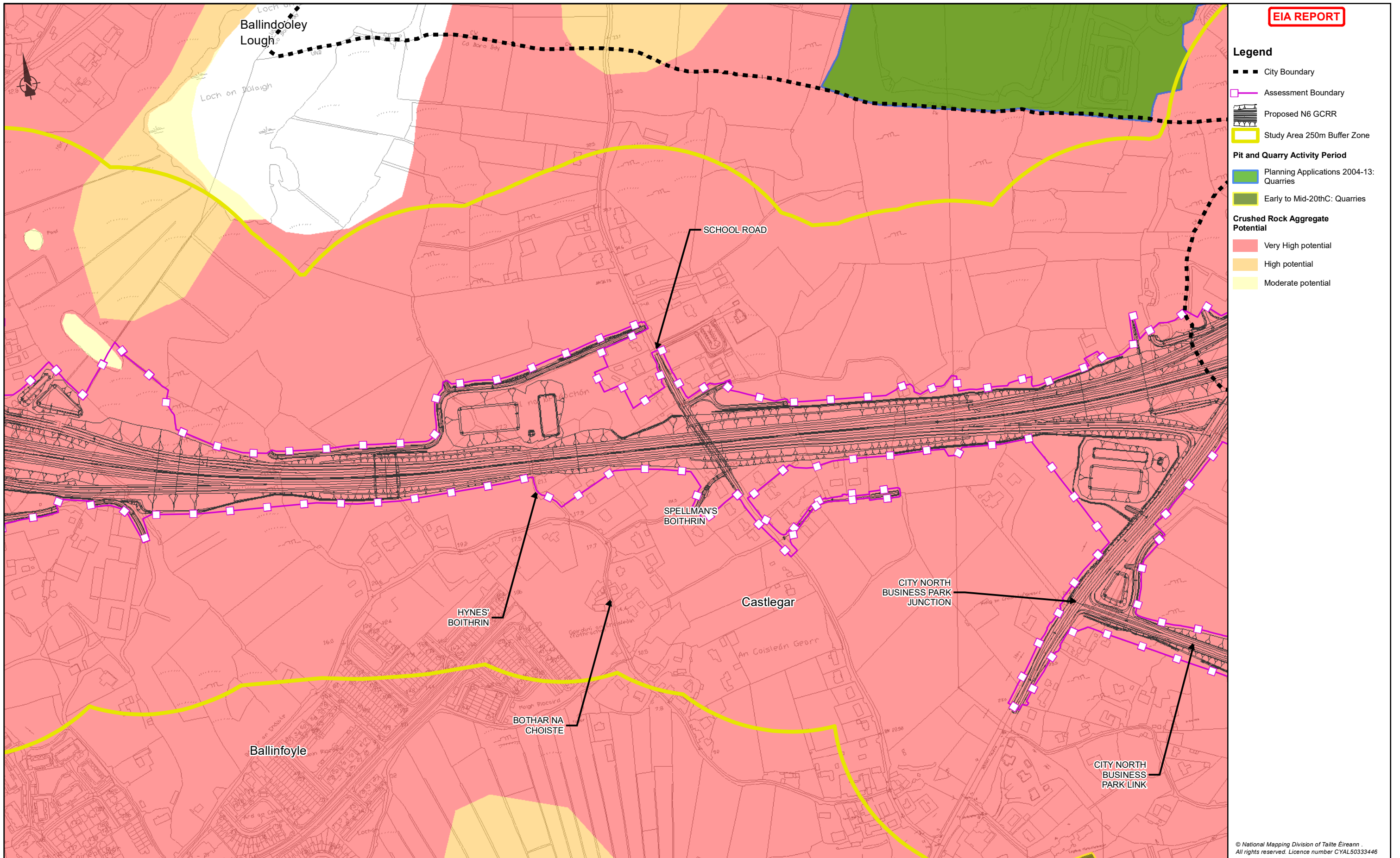
N6 Galway City Ring Road

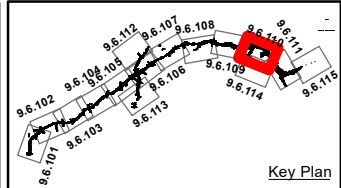
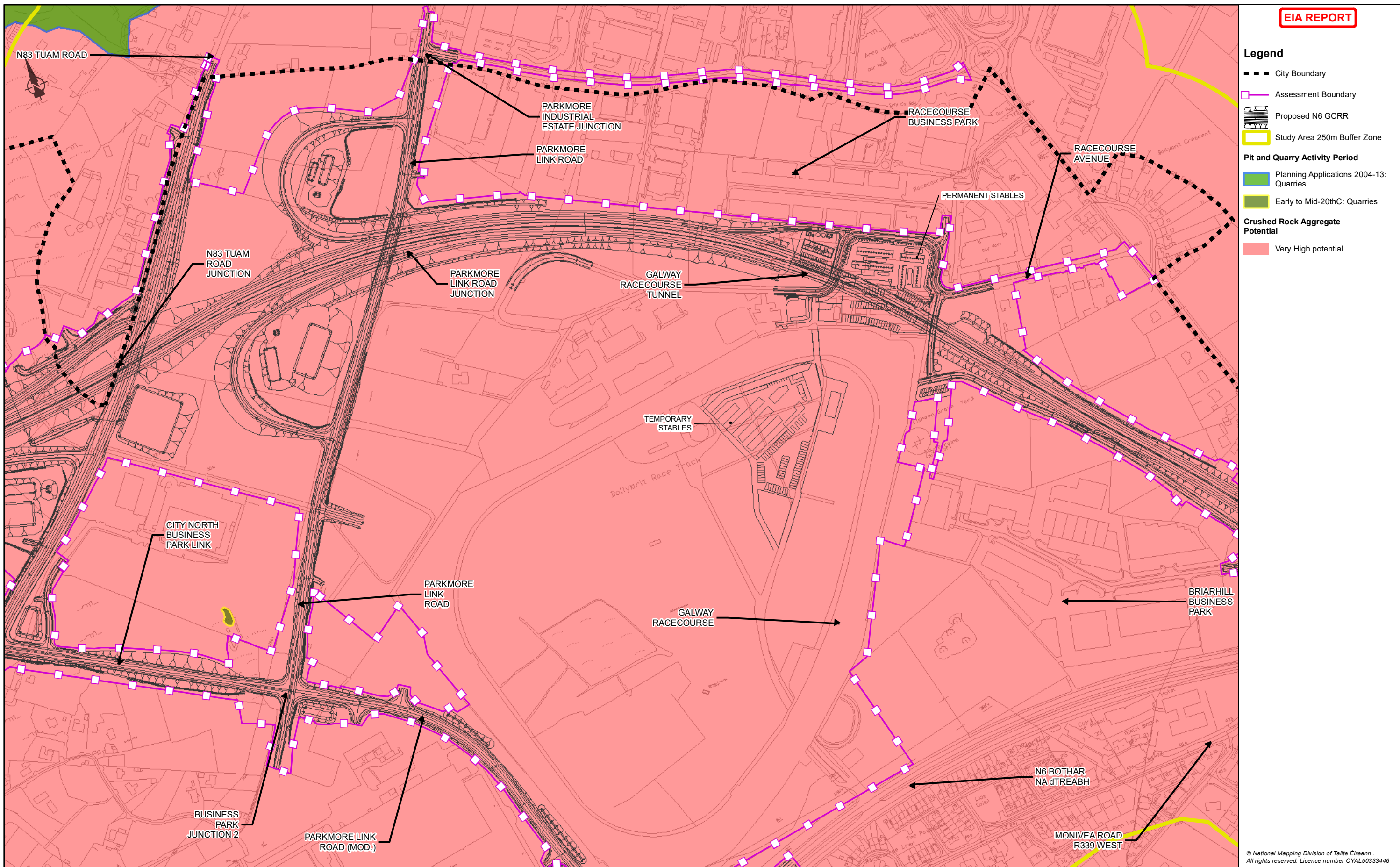
Scale: 1: 5000 @A3

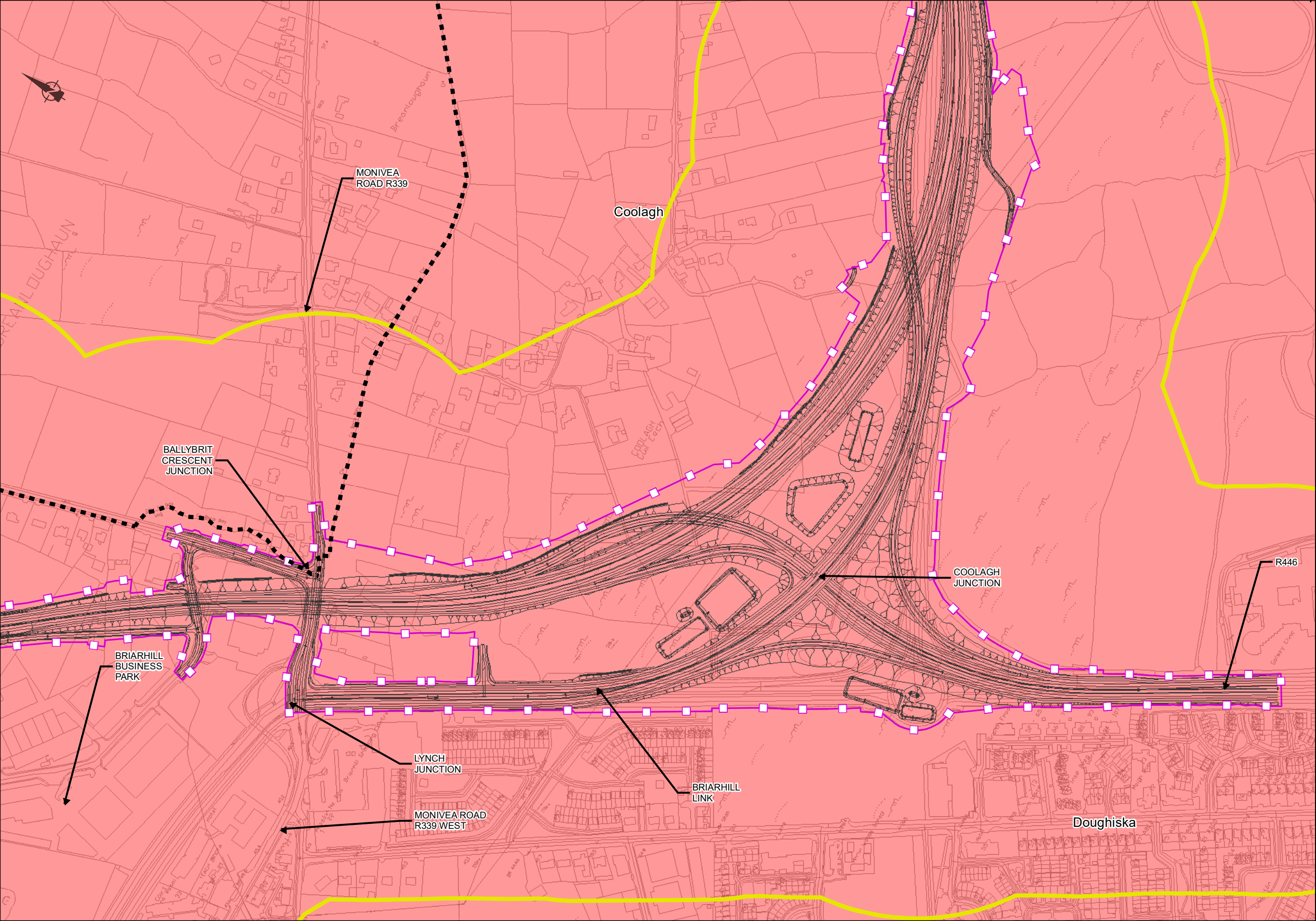
Date: February 2025

Drawing Status				
For Information				
Job No	Drawing No	Issue		
233985	Figure 9.6.108	11		

Drawing Title				
Mineral and Aggregate Sheet 8 of 15				
Drawing Status				
For Information				
Job No	Drawing No	Issue		
233985	Figure 9.6.108	11		







EIA REPORT

Legend

City Boundary

Assessment Boundary

Proposed N6 GCRR

Study Area 250m Buffer Zone

Crushed Rock Aggregate Potential

Very High potential

© National Mapping Division of Taitte Éireann .
All rights reserved. Licence number CYAL50333446

Clients

An Roinn Iompair
Department of Transport

Tionscadal Éireann
Project Ireland
2040

N6

Galway City
Transport Project

Comhairle Chontae na Gaillimhe
Galway County Council

TIIV

Borradh Iompar Chontae na Gaillimhe

Consultant

ARUP

Corporate House
City East Business Park
Ballybrit, Galway, Ireland

Tel +353 (0)91 460675
www.N6GalwayCity.ie
www.arup.ie

Job Title

N6 Galway City Ring Road

Scale: 1: 5000 @A3

Date: February 2025

I1	28/02/2025	MF	EC	MH
Issue	Date	By	Chkd	Appd

Drawing Title

Mineral and Aggregate
Sheet 11 of 15

Drawing Status

For Information

Job No

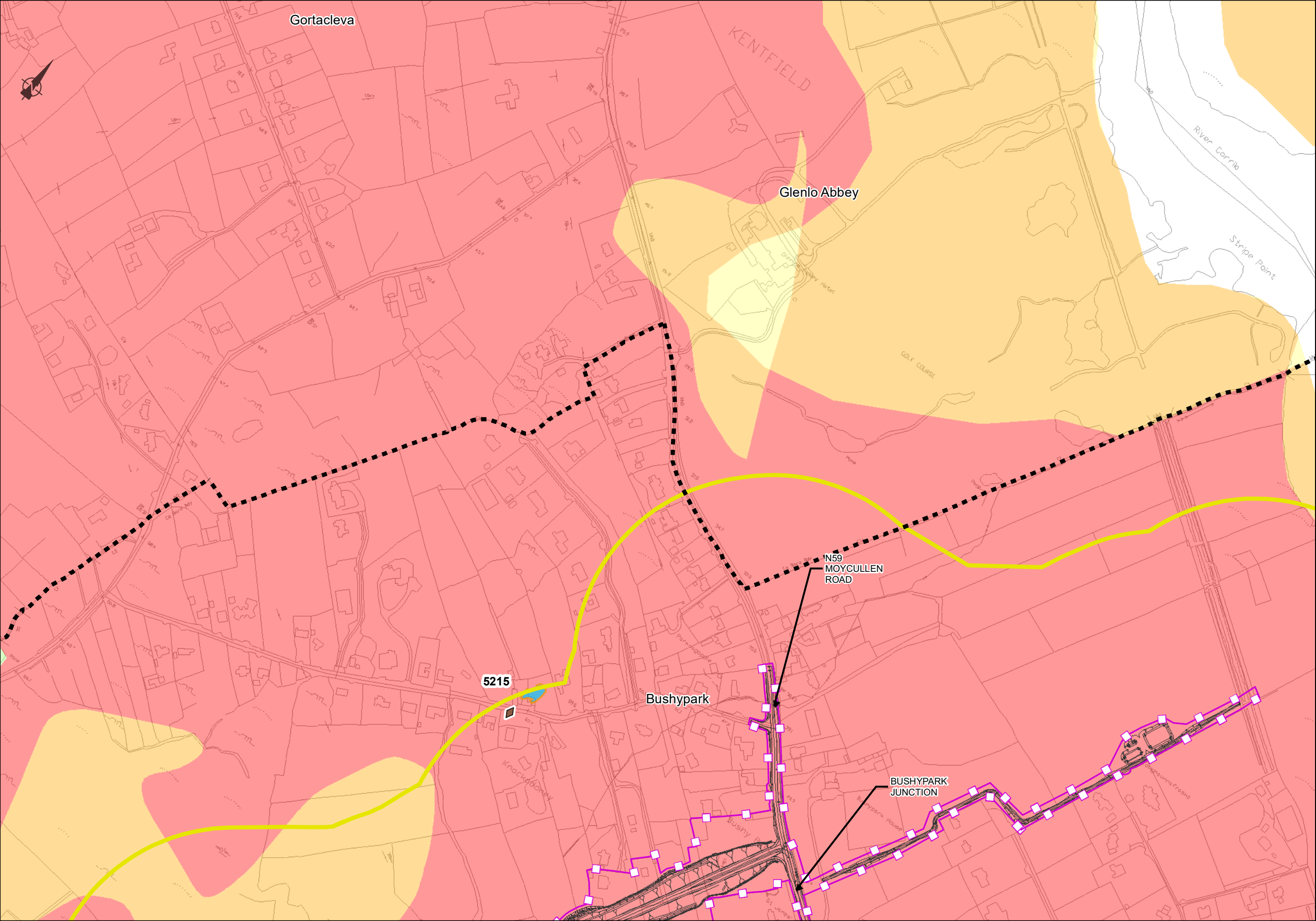
233985

Drawing No

Figure 9.6.111

Issue

11



EIA REPORT

Legend

City Boundary

Assessment Boundary

Proposed N6 GCRR

Study Area 250m Buffer Zone

Mineral Localities (ML)

Non-metallic

Pit and Quarry Activity Period

Early to Mid-20thC: Pits

Crushed Rock Aggregate Potential

Very High potential

High potential

Moderate potential

Low potential

© National Mapping Division of Taité Éireann
All rights reserved. Licence number CYAL50333446

Clients

An Roinn Iompair
Department of Transport

Tionscadal Éireann
Project Ireland
2040

N6

Galway City
Transport Project

Comhairle Chontae na Gaillimhe
Galway County Council

TIIV

Transport Infrastructure
Investment Vision

Consultant

ARUP

Corporate House
City East Business Park
Ballybrit, Galway, Ireland

Tel +353 (0)91 460675
www.N6GalwayCity.ie
www.arup.ie

Job Title

N6 Galway City Ring Road

Scale: 1: 5000 @A3

Date: February 2025

I1	28/02/2025	MF	EC	MH
Issue	Date	By	Chkd	Appd

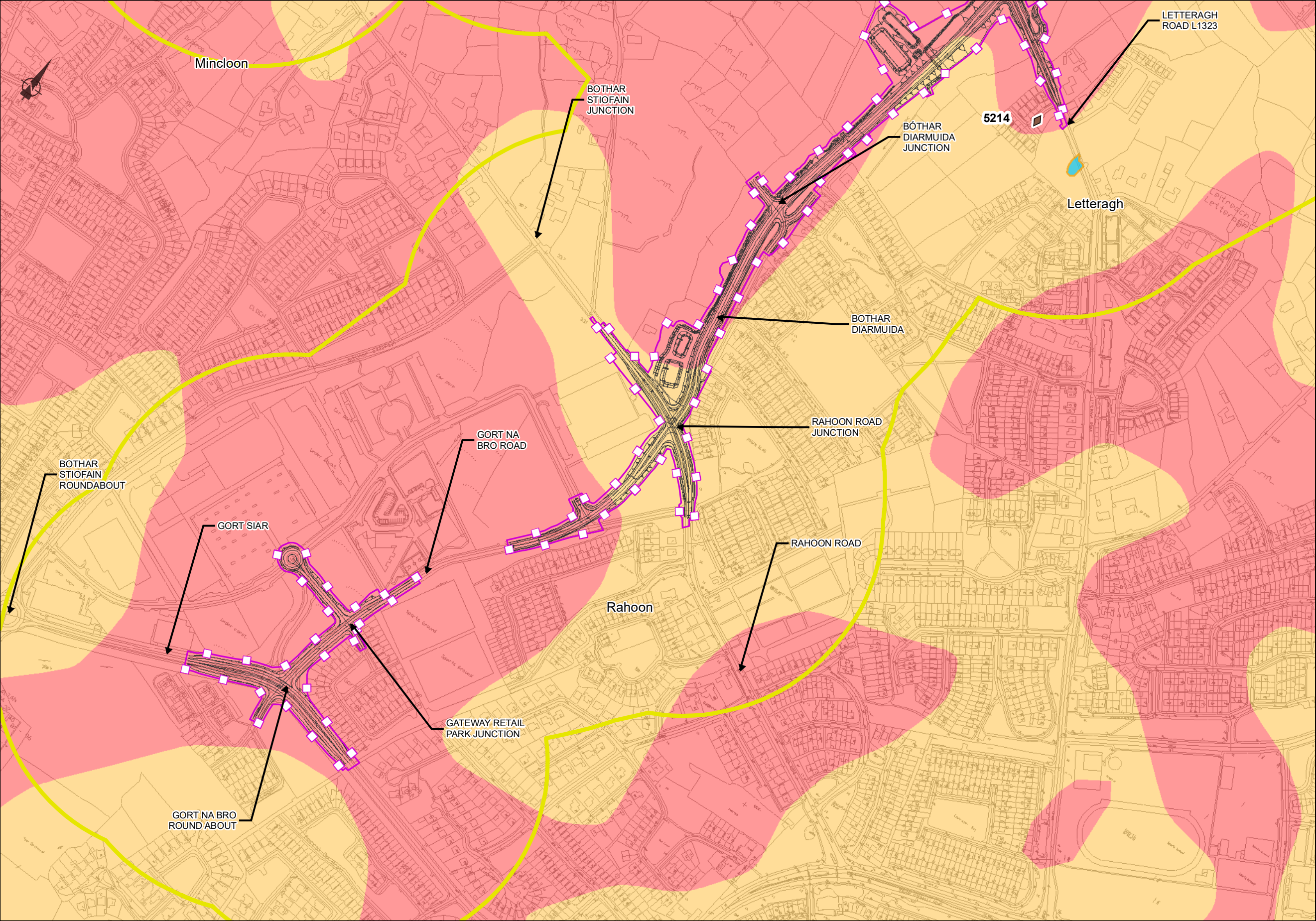
Drawing Title

Mineral and Aggregate
Sheet 12 of 15

Drawing Status

For Information

Job No	Drawing No	Issue
233985	Figure 9.6.112	11



EIA REPORT

Legend

- City Boundary
- Assessment Boundary
- Proposed N6 GCRR
- Study Area 250m Buffer Zone

Mineral Localities (ML)

- Non-metallic

Pit and Quarry Activity Period

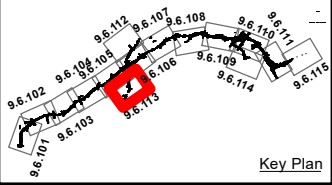
- Early to Mid-20thC: Pits

Crushed Rock Aggregate Potential

- Very High potential
- High potential

© National Mapping Division of Taitte Éireann .
All rights reserved. Licence number CYAL50333446

Clients



Consultant

ARUP

Corporate House
City East Business Park
Ballybrit, Galway, Ireland

Tel +353 (0)91 460675
www.N6GalwayCity.ie
www.arup.ie

Job Title

N6 Galway City Ring Road

Scale: 1: 5000 @A3

Date: February 2025

I1	28/02/2025	MF	EC	MH
Issue	Date	By	Chkd	Appd

Drawing Title

Mineral and Aggregate
Sheet 13 of 15

Drawing Status

For Information

Job No

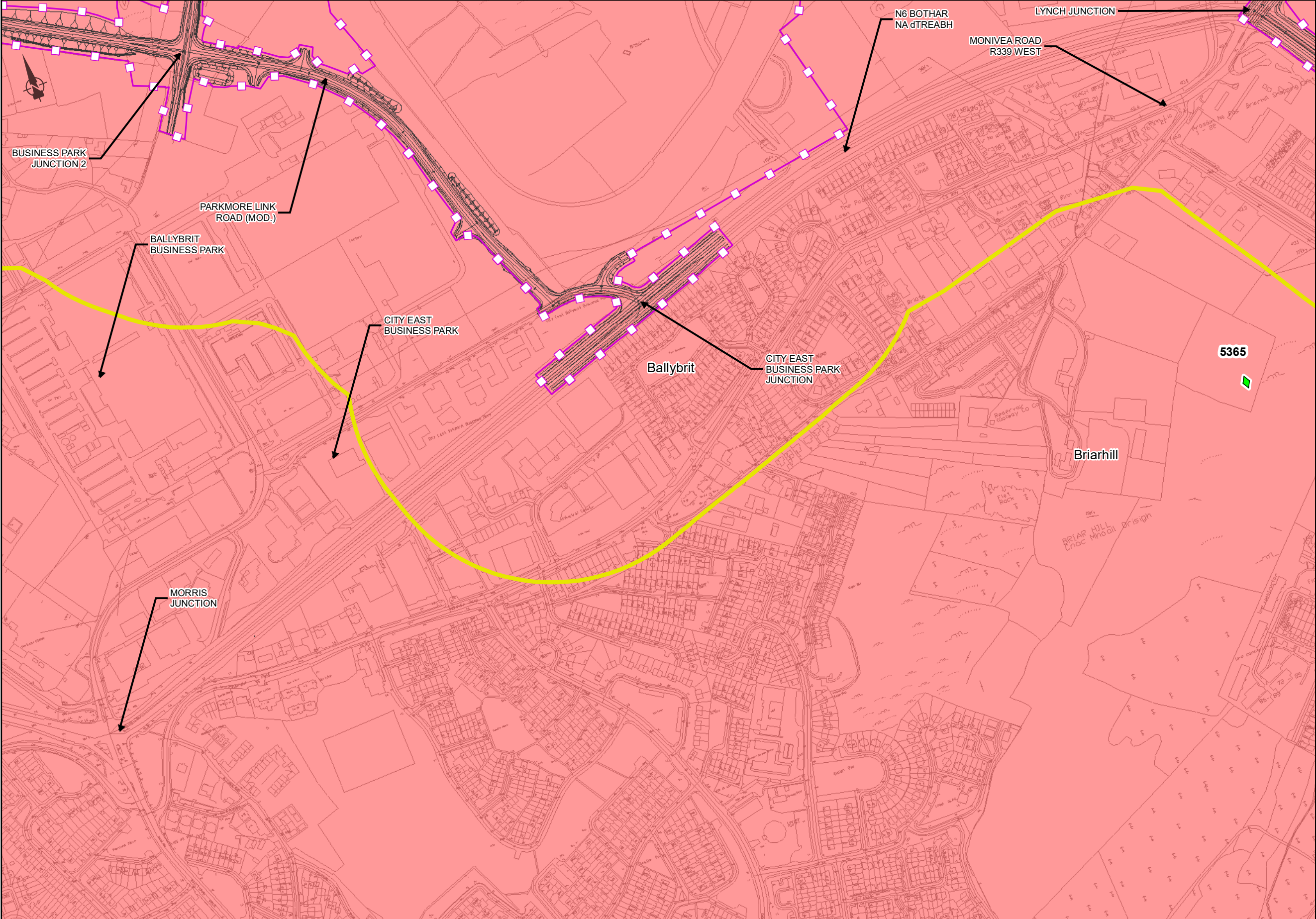
233985

Drawing No

Figure 9.6.113

Issue

11



EIA REPORT

Legend

- City Boundary
- Assessment Boundary
- Proposed N6 GCRR
- Study Area 250m Buffer Zone

Mineral Localities (ML)

- Metallic

Crushed Rock Aggregate Potential

- Very High potential

© National Mapping Division of Taitte Éireann
 All rights reserved. Licence number CYAL50333446

Clients

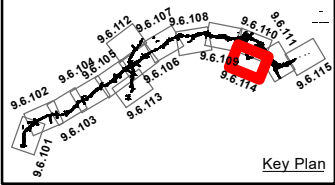
An Roinn Iompair
 Department of Transport

Tionscadal Eilroon
 Project Ireland
 2040

Galway City
 Transport Project

Comhairle Chontae na Gaillimhe
 Galway County Council

Tírv
 Transport Infrastructure



Consultant

Corporate House
 City East Business Park
 Ballybrit, Galway, Ireland

Tel +353 (0)91 460675
 www.N6GalwayCity.ie
 www.arup.ie

Job Title
N6 Galway City Ring Road

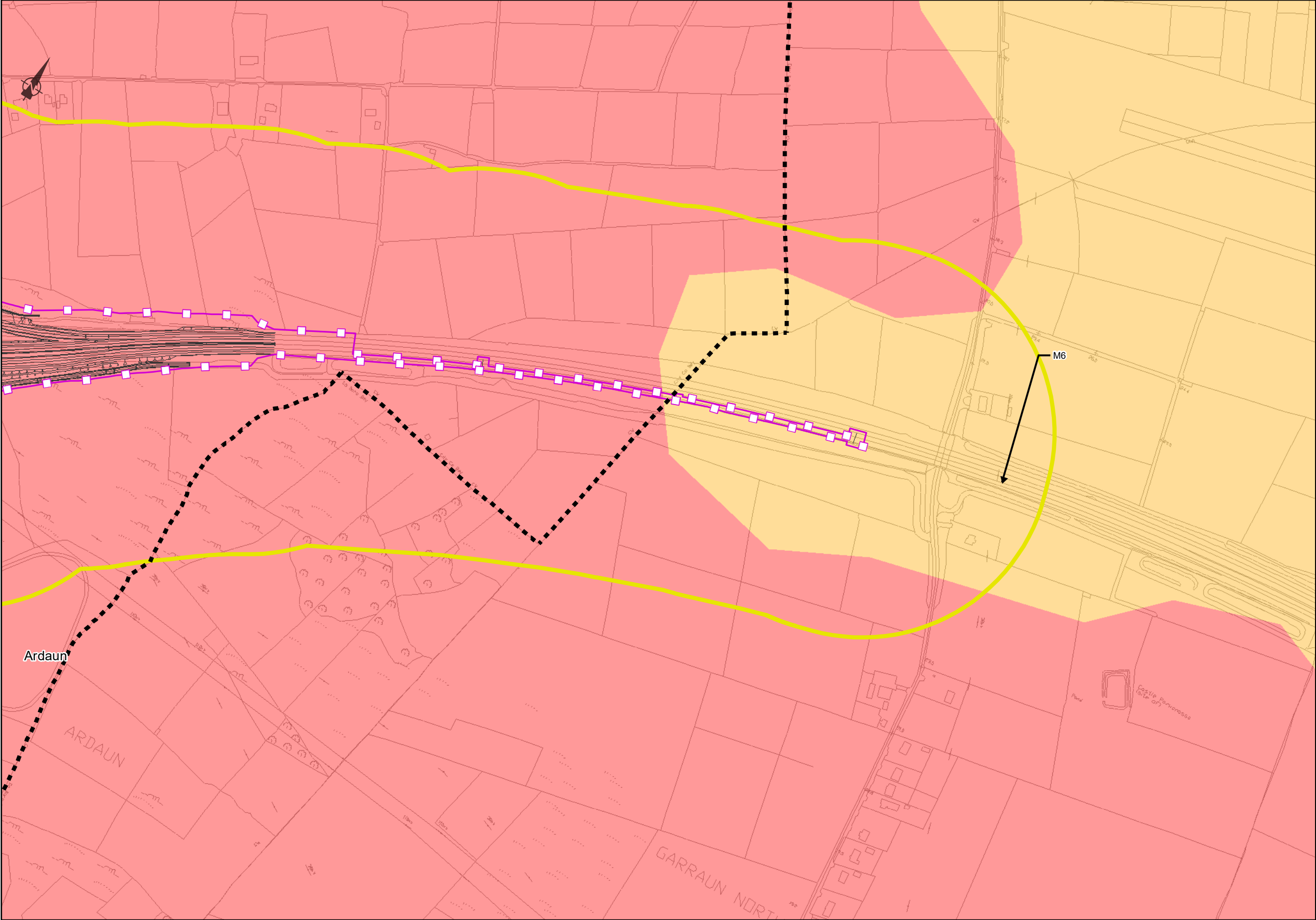
Scale: 1: 5000 @A3
 Date: February 2025

I1	28/02/2025	MF	EC	MH
Issue	Date	By	Chkd	Appd

Drawing Title
 Mineral and Aggregate
 Sheet 14 of 15

Drawing Status
 For Information

Job No	Drawing No	Issue
233985	Figure 9.6.114	11



EIA REPORT

Legend

City Boundary

Assessment Boundary

Proposed N6 GCRR

Study Area 250m Buffer Zone

Crushed Rock Aggregate Potential

Very High potential

High potential

© National Mapping Division of Taitte Éireann .
All rights reserved. Licence number CYAL50333446

Clients

An Roinn Iompair
Department of Transport

Tionscadal Éireann
Project Ireland
2040

N6

Galway City
Transport Project

Comhairle Chontae na Gaillimhe
Galway County Council

TIIV

Transport Infrastructure
Investment Vision

Consultant

ARUP

Corporate House
City East Business Park
Ballybrit, Galway, Ireland

Tel +353 (0)91 460675
www.N6GalwayCity.ie
www.arup.ie

Job Title

N6 Galway City Ring Road

Scale: 1: 5000 @A3

Date: February 2025

I1	28/02/2025	MF	EC	MH
Issue	Date	By	Chkd	Appd

Drawing Title

Mineral and Aggregate
Sheet 15 of 15

Drawing Status

For Information

Job No

233985

Drawing No

Figure 9.6.115

Issue

11